



Ten Reasons to Hire an Innovation Speaker


<http://innovation-speaker.com>




To begin an honest dialog around the role of innovation in your organization's future

Ten Reasons to Hire an Innovation Speaker

2



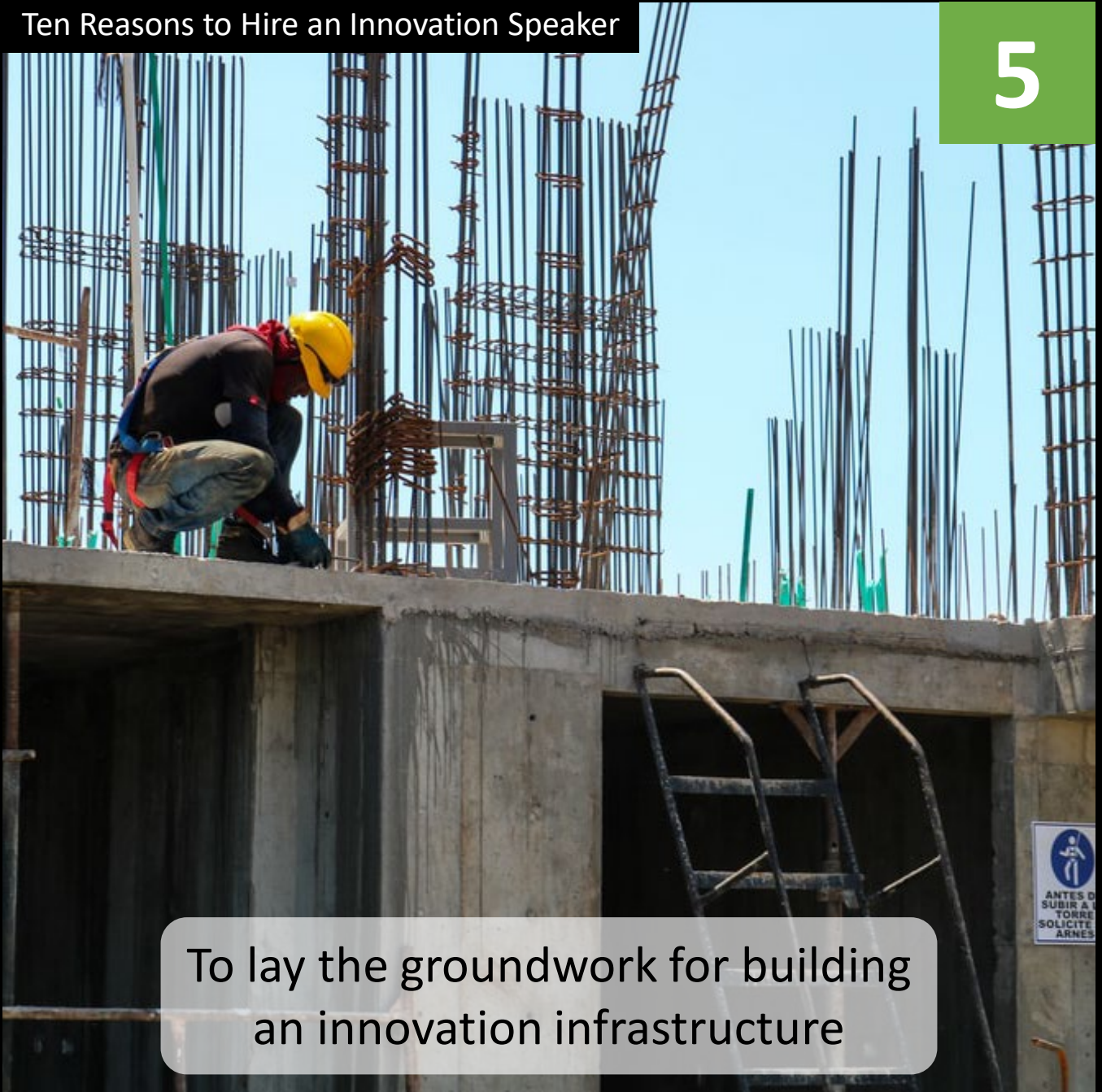
To help build/reinforce your
common language of innovation




To bring in fresh ideas to
inspire fresh insights



To bring additional perspectives to
existing innovation conversations




To lay the groundwork for building
an innovation infrastructure

A woman with dark, wavy hair and green eyes is peeking over a white sheet. She is holding the sheet with both hands, and only her eyes and the top of her head are visible. The background is a soft, out-of-focus white, suggesting a bed or a clean, bright environment. The overall mood is one of curiosity or perhaps a hint of fear, which aligns with the text about reducing the fear of innovation.

To help reduce the fear of
innovation in your organization

A young man with curly dark hair, wearing an olive green bomber jacket over a black t-shirt and light blue jeans, stands on the left. A young woman with long brown hair, wearing a black bomber jacket with a yellow star patch on the chest over a yellow t-shirt and dark jeans, stands on the right. They are holding hands and smiling. The background is a vibrant wall covered in pink, purple, and black graffiti. A semi-transparent grey box at the bottom contains the text.

To reinforce your commitment to innovation publicly to your employees

A person is shown from the chest up, holding a glowing white lightning bolt shape. The background is a blurred cityscape at night with many colorful lights (blue, red, yellow) creating a bokeh effect. The person is wearing a dark jacket and a watch on their left wrist.

To increase the energy for
innovation in your company

A conceptual photograph showing a glowing incandescent lightbulb. The base of the bulb is replaced by a complex mechanical assembly of metal rods, joints, and springs, resembling a robotic arm or a mechanical gripper. This mechanical base is plugged into a standard white wall outlet. The lightbulb is illuminated, casting a warm glow. The background is a plain, light-colored wall and a dark surface.

To inject fresh life into an existing innovation program



To combine with an innovation workshop
to build new innovation capabilities



**Book *your* next innovation speaker
at
<http://innovation-speaker.com>**